

PARKROYAL COLLECTION

KUALA LUMPUR

Inspiringly Yours

An urban oasis nestled in a vibrant city

With 527 rooms and suites featuring lush greenery and sustainable amenities, and a dedicated wellness floor, feel a sense of rejuvenation and invigoration when stepping into our spaces.



LIFESTYLE PREMIER ROOM

An eco-chic icon and social hub in the heart of Kuala Lumpur

Sitting in the heart of Kuala Lumpur's renowned Golden Triangle area, PARKROYAL COLLECTION Kuala Lumpur is a 5-minute walk from Bukit Bintang MRT station, affording the hotel a prime location with excellent connectivity to transportation hubs and the rest of the city.



ICONIC DESIGN



BIOPHILIC CONCEPT

Spaces where relaxation grows

185 Urban Deluxe	8 Urban Suite
215 Lifestyle Premier	13 Lifestyle and Premier Suite
83 COLLECTION Club	2 Signature Suite
1 PARKROYAL COLLECTION Suite	20 Family Suite

Whether you're here on business or for pleasure, you'll enjoy a retreat unmatched in terms of quality. All rooms are fitted with a flat-screen Smart LED TV, complimentary Wi-Fi, filtered water dispenser, and biodegradable bath amenities.

Always at your service



Be inspired by spaces where modern design and nature intersect

PARKROYAL COLLECTION carries a strong sense of responsibility towards the environment with sustainability practices and care for overall wellbeing as its brand ethos.

- The hotel's biophilic design is a celebration of iconic architecture and design within lush greenery, designed by FDAT Architects.
- Sky planters and a roof terrace feature 13,000 square feet of green foliage, lending the hotel a unique façade that positions the hotel as a garden in the city.



Urban Farm experience

Take a stroll at our Urban Farm and immerse in a farm-to-table, farm-to-bar, and farm-to-spa experience with a diverse variety of vegetables, fruits, and edible flowers.

St. Gregory Spa

Experience St. Gregory spa's wide range of amazing treatments and luxurious wellness care products to pamper yourself with, including Elemis, Biossentials, and Malaysia's very own KUEM.

Take a breather

- Get your daily laps in our saltwater pool, or lay back in the poolside cabanas.
- Reinvigorate the body at the fitness studio or our gym, with state-of-the-art equipment from TechnoGym.



The COLLECTION Club experience

Heighten your stay experience with an array of enhanced privileges when staying in COLLECTION Club rooms and suites, including exclusive access to the COLLECTION Club Lounge.

- Daily buffet breakfast, evening aperitifs, and all-day refreshments at the Lounge
- Complimentary laundry of up to three (3) pieces per room per night (non-accumulative), excluding dry cleaning
- 20% savings on à la carte treatments at St. Gregory spa.
- Late check-out up to 3:00pm (subject to availability)



Restaurants and bars

Thyme is our signature all-day restaurant serving food with local and Western selections from its seven pockets of live open cooking stations, complemented with farm-to-table dishes for a truly sustainable experience.

The Botanist Lounge & Bar draws inspiration from the natural diverse world of fauna in Malaysia. The concept emphasises harmony with nature, with a menu that celebrates locality and sustainable ingredients.

Skye Chill is based on dual concepts, focusing on serene wellbeing during the day and unwinding on a relaxing terrace lounge in the evenings under the skyline.

Conduct events in style

Dedicated to your Love, Life, and Legacy

- The COLLECTION Ballroom is pillarless with curving arched walls that let in natural daylight; a feature ceiling with 2500 suspended lights.
- The Garden Ballroom has dedicated sky gardens and ample natural daylight.
- Pre-function and breakout spaces are available.
- Sustainable and green meeting solutions.
- A dedicated Wedding Gallery and Celebrations Curator.



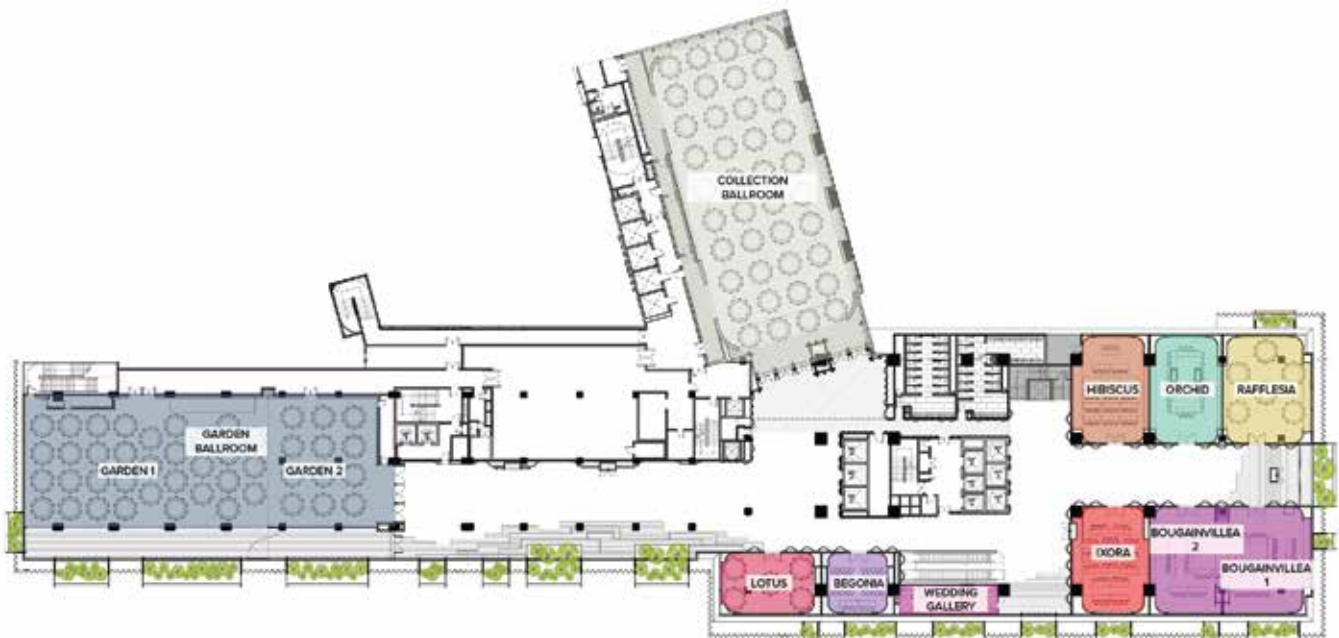
Where bespoke events of all kinds come together

- 1,664 square metres of versatile meeting and function spaces
- Two state-of-the-art high ceiling ballrooms
- Eight pillarless meeting rooms
- Sustainable amenities such as water filter station, conscious dining menus
- State-of-the-art LCD screen and sound system
- Dedicated meeting floor on Level 2



Floor capacity information

VENUE	BANQUET	THEATRE	CLASSROOM	CONFERENCE	U-SHAPE	COCKTAIL	CEILING HEIGHT (feet)	CEILING HEIGHT (metre)	FLOOR AREA (square feet)	FLOOR AREA (square metre)
COLLECTION Ballroom	400	475	200	126	108	475	16	4.9	5,586	519
Garden Ballroom	450	500	250	138	165	500	20	6.0	5,683	528
Garden 1	330	350	150	90	72	320	20	6.0	3,875	360
Garden 2	120	120	50	60	48	120	20	6.0	1,808	168
Hibiscus	40	60	30	42	36	60	9	2.6	807	75
Orchid	40	60	30	42	36	60	9	2.6	828	77
Rafflesia	60	65	30	39	30	65	9	2.6	1,087	101
Bougainvillea	120	130	55	72	57	130	9	2.6	2,034	189
Bougainvillea 1	60	60	30	42	36	60	9	2.6	1,152	107
Bougainvillea 2	60	60	30	42	36	60	9	2.6	883	82
Ixora	40	60	30	42	36	60	9	2.6	807	75
Begonia	30	30	15	18	15	30	9	2.6	430	40
Lotus	40	45	20	18	15	45	9	2.6	646	60

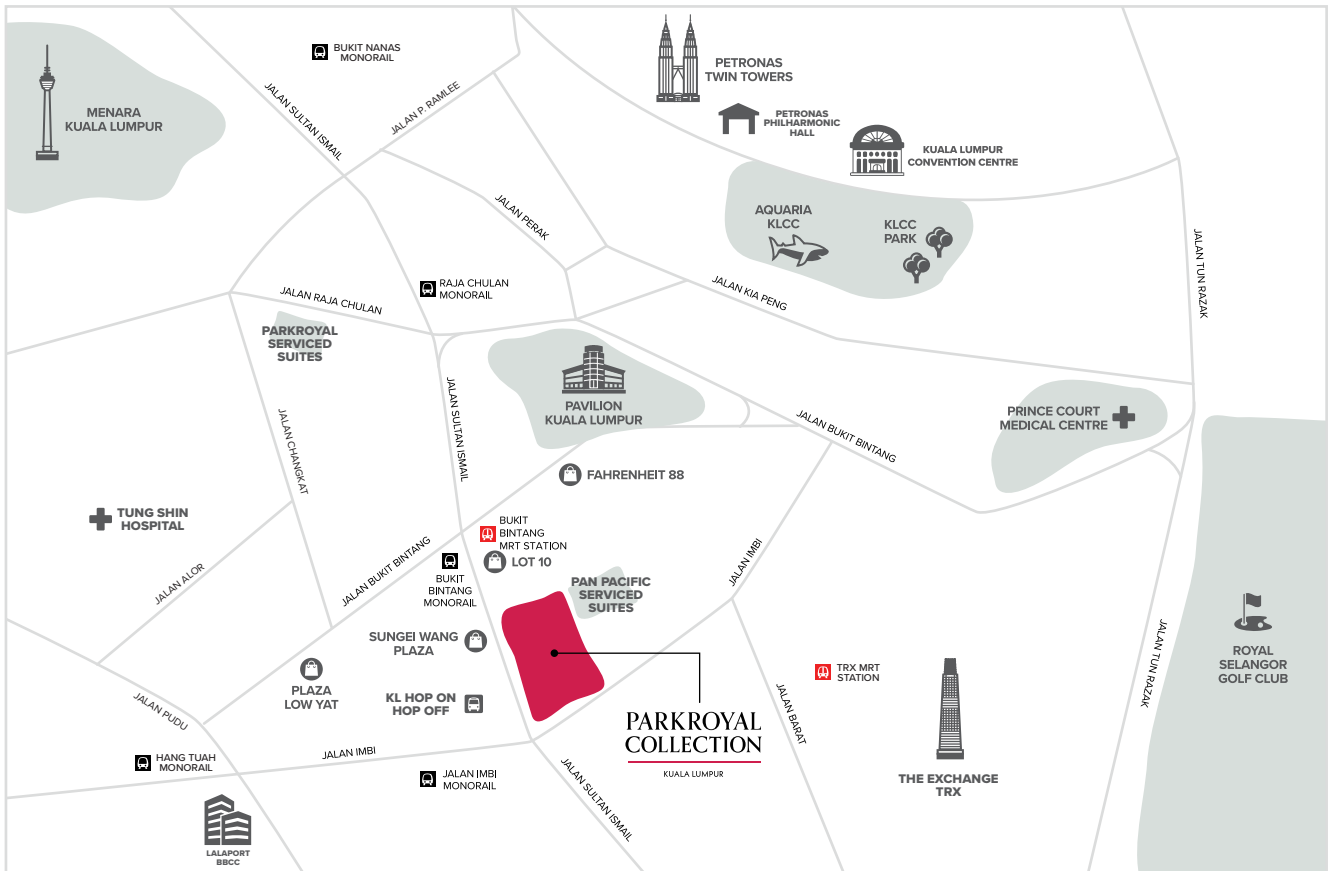


Stay at the heart of it all

Convenient access to popular malls such as Pavilion Kuala Lumpur and KLCC, and Tun Razak Exchange, Kuala Lumpur's international financial district.

Close proximity to KL Hop On Hop Off sightseeing bus station, Bukit Bintang MRT station, and Bukit Bintang monorail station.

Situated near the famous Jalan Alor food street and Jalan Changkat, known for its bars and nightlife.



Global sales offices

Australia

2 Convention Centre Place,
South Wharf
Victoria 3006
Australia
Tel : +61 3 9027 2036
Email : gsoaustralia@pphg.com

Hong Kong

4/F IWG Spaces
Lee Garden 3, 1 Sunning Road
Causeway Bay
Hong Kong, China
Tel : +852 3905 4688
Email : gsohongkong@pphg.com

London, UK

Tempest House
38 Hillside Road, Ashstead
Surrey KT21 1RX
UK
Tel : +44 (0) 1372 210210
Email : gsouk@pphg.com

PARKROYAL COLLECTION KUALA LUMPUR, MALAYSIA

Jalan Sultan Ismail, Bukit Bintang, 50250 Kuala Lumpur, Malaysia
T: +603 2782 8388
E: sales.prckul@parkroyalcollection.com

panpacific.com

Follow us on:

@parkroyalcollectionkl

PAN PACIFIC
HOTELS GROUP
A Member of UOL Group

Beijing, China

No.2 Hua Yuan Street,
Xicheng District,
Beijing, 100032 China
Tel : +86 10 6623 9724
Email : gsobeijing@pphg.com

Tokyo, Japan

18F JR Shinjuku Miraina Tower,
4-1-6 Shinjuku, Shinjuku-ku,
Tokyo 160-0022
Tel : +81 3 6804 6222
Email : gsotokyo@pphg.com

New York, USA

188 King Street #509
San Francisco, CA 94107
USA
Tel : +1 973 288 1886
Email : gsonewyork@pphg.com

Shanghai, China

Room 525, 5F Ascendas Plaza,
333 Tian Yao Qiao Road
Shanghai, 200030, China
Tel : +86 21 6448 3068
Email : gsoshanghai@pphg.com

Singapore

7500A Beach Road
The Plaza #03-301
Singapore 199591
Tel : +65 6808 1263
Email : gsosingapore@pphg.com

San Francisco, USA

188 King Street #509
San Francisco, CA 94107
USA
Tel : +1 707 227 9281
Email : gsosanfrancisco@pphg.com

GDS

AMADEUS
SABRE
GALILEO/APOLLO
WORLDSPAN
PEGS ADS
Chain Code

PROPERTY CODE

KULPAR
23844
26019
42917
PRKUL
PL